



SERVICE PARTS LIST

BULLETIN NO.
54-05-2720

SPECIFY CATALOG NO. AND SERIAL NO. WHEN ORDERING PARTS		REVISED BULLETIN	DATE
M18 FUEL™ Blower			Feb. 2026
CATALOG NO. 3017-20	SERIAL NO. P29A	WIRING INSTRUCTION See Page 3	

EXAMPLE:
Component Parts
(Small #) Are Included
When Ordering the
Assembly (Large #).

FIG. 47, 48 **NOTES**
A clean, dry surface is essential for proper performance for any adhesive system. The area intended for application of any adhesive label or nameplate must be prepared by cleaning with isopropyl alcohol. The solvent is to be applied with a clean, lint free applicator and the surface allowed to dry before applying any label or nameplate.

NOTE: If the nyloc nut (3) is removed during disassembly, it MUST be replaced with a new one.

NOTE: If the Electronics (61) or Rotor Assembly (62) is replaced, you MUST replace the Motor Insulator Service Kit (63).

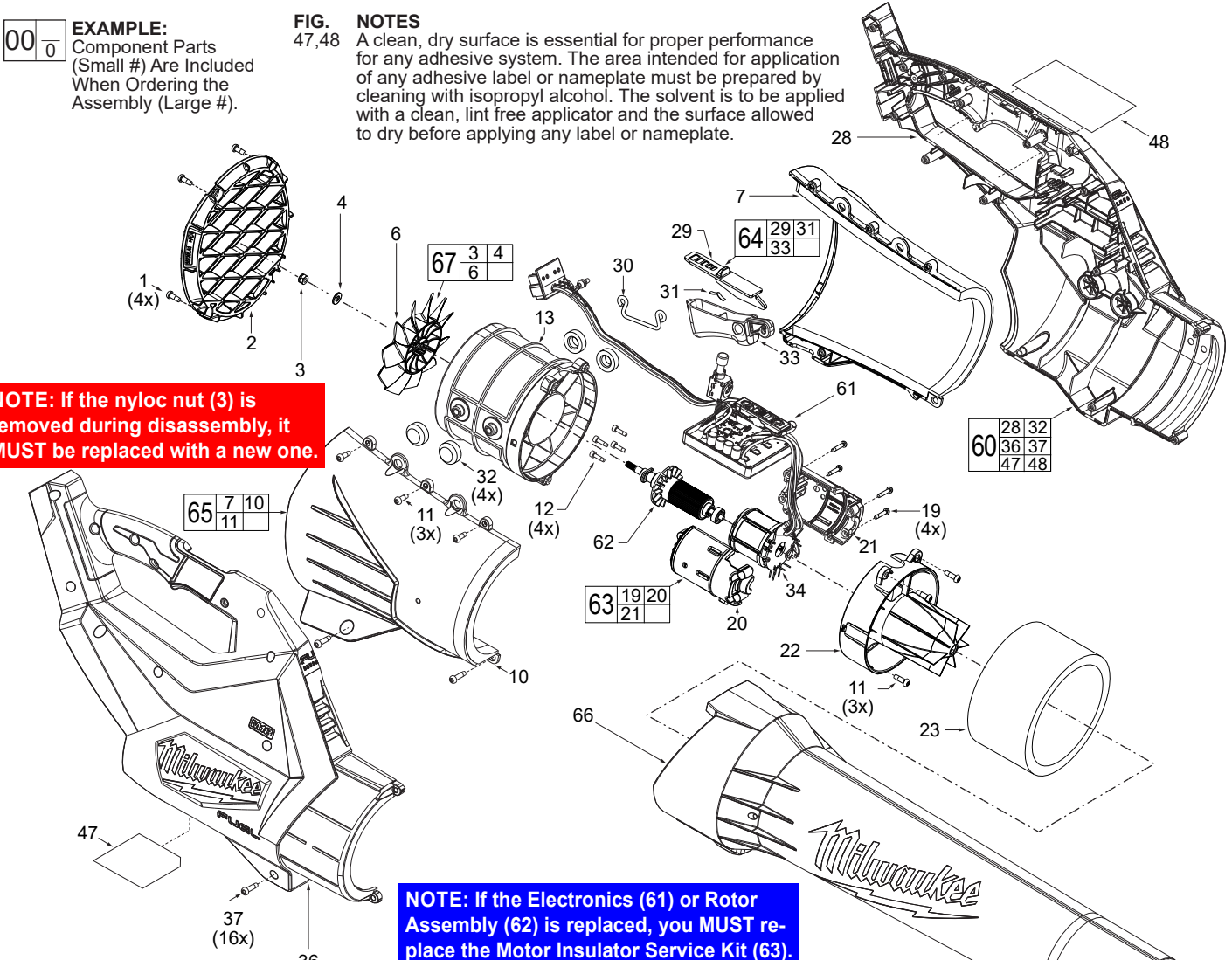


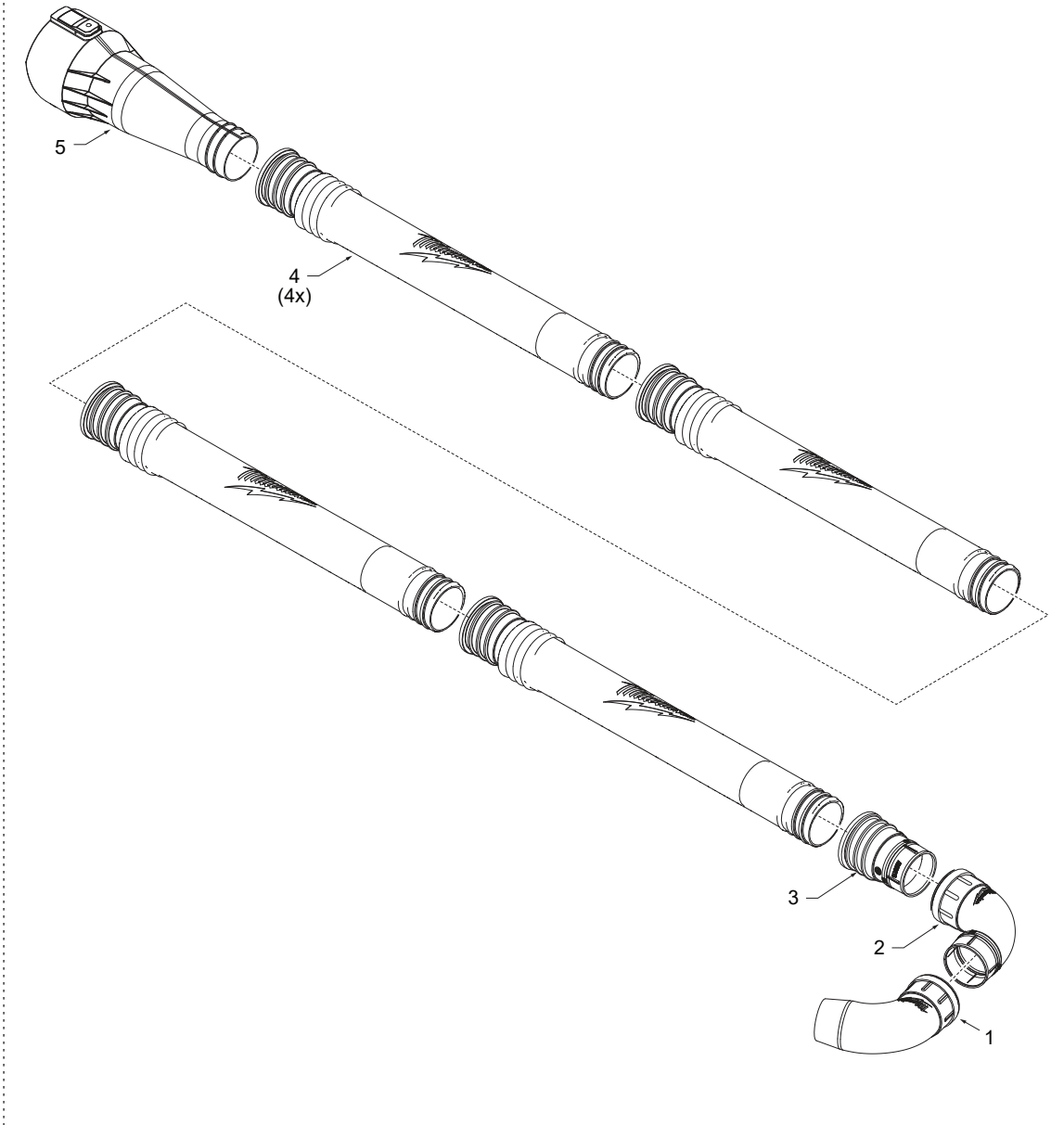
FIG.	PART NO.	DESCRIPTION OF PART	NO. REQ.
1	05-88-1220	M4 Pan Hd. T-20 Screw	(4)
2	23-33-0067	Inlet Vent	(1)
3	05-55-0022	M5 Nylon Insert Nut	(1)
4	-----	Flat Washer	(1)
6	-----	Fan	(1)
7	-----	Inlet Muffler Support with foam	(1)
10	-----	Inlet Muffler Cover with foam	(1)
11	06-82-0032	M4 x 12mm Pan Hd. T-20 CH Screw	(6)
12	05-74-0203	M3 Screw	(4)
13	23-33-0069	Inlet Duct	(1)
19	-----	Pan Hd. T-10 Screw	(4)
20	-----	Motor Housing Support	(1)
21	-----	Motor Housing Cover	(1)
22	23-33-0074	Outlet Duct	(1)
23	23-33-0076	Outlet Foam	(1)
28	-----	Handle Support	(1)
29	-----	Cruise Control Slider	(1)
30	22-38-0101	Grounding Wire	(1)
31	-----	Spring Plate	(1)
32	-----	Rubber Grommet	(4)
33	-----	Blower Trigger	(1)
34	-----	Stator	(1)
36	-----	Handle Cover	(1)
37	-----	M4 x 1.41 Pan Hd. T-20 Taptite Screw	(16)
47	12-20-0588	Service Nameplate	(1)
48	10-22-0640	Warning Label	(1)
60	14-46-0786	Housing Service Kit	(1)
61	14-46-0787	Electronics Assembly	(1)

FIG.	PART NO.	DESCRIPTION OF PART	NO. REQ.
62	14-46-0788	Rotor Assembly	(1)
63	14-46-0789	Motor Insulator Service Kit	(1)
64	14-46-0790	Trigger Service Kit	(1)
65	14-46-0792	Inlet Duct Service Kit	(1)
66	14-46-0794	Tube Assembly	(1)
67	14-46-0698	Fan Service Kit	(1)

SCREW TORQUE SPECIFICATIONS				
FIG.	PART NO.	WHERE USED	SEAT TORQUE	
			(kgf-cm)	(lb-in)
1	05-88-1220	Inlet Grate	11±1	10±1
3	05-55-0033	Nut	25±3	22±3
11a	06-82-0032	Inlet Muffler	11±1	10±1
11b	06-82-0032	Outlet Duct to Inlet Duct	14±2	12±2
12	05-74-0203	Inlet Stator to Motor Hsg	5±1	4±1
19	-----	Motor Housing	8±1	7±1
37	-----	Handle Housing (Qty. 13)	11±1	10±1
37	-----	Handle Housing (Qty. 3)	8±1	7±1

BLOWER ATTACHMENTS

9-pc. Gutter Attachment Kit (49-16-2790)



Additional Nozzle Attachments

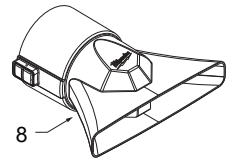
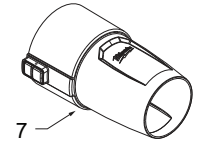
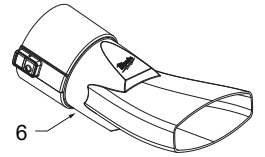


FIG.	PART NO.	DESCRIPTION OF PART	NO. REQ.
1	43-33-0027	Gutter Attachment Restricted Elbow	(1)
2	43-33-0021	Gutter Attachment Elbow	(1)
3	42-04-0021	Gutter Attachment Threaded Adapter	(1)
4	43-24-0013	Gutter Attachment Extension	(4)
5	43-24-0145	Gutter Attachment Nozzle	(1)
6	49-16-2791	Angled Flare Nozzle Attachment	(1)
7	31-12-0121	Tapered Nozzle Attachment	(1)
8	31-12-0122	Flared Nozzle Attachment	(1)

SCREW SEQUENCE

